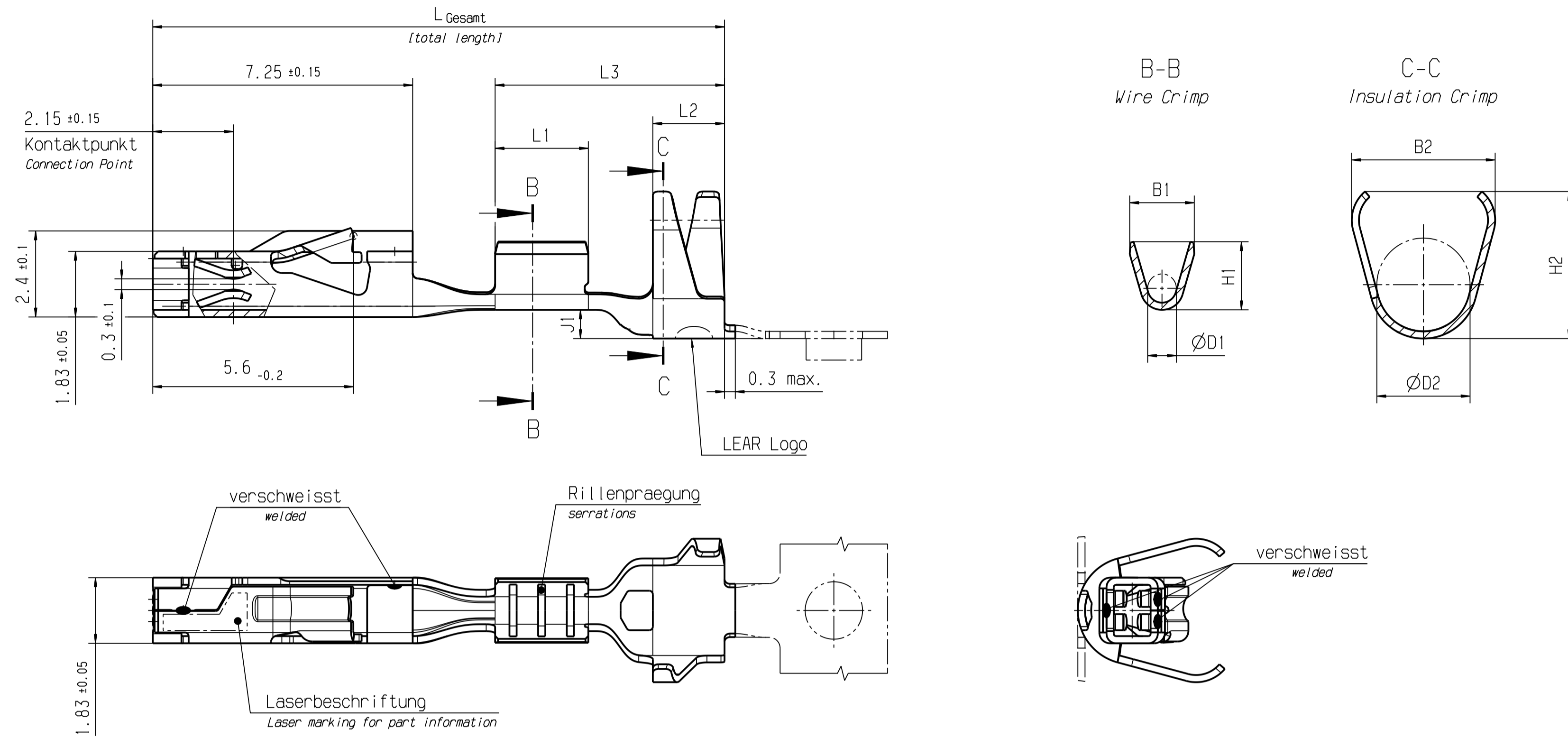
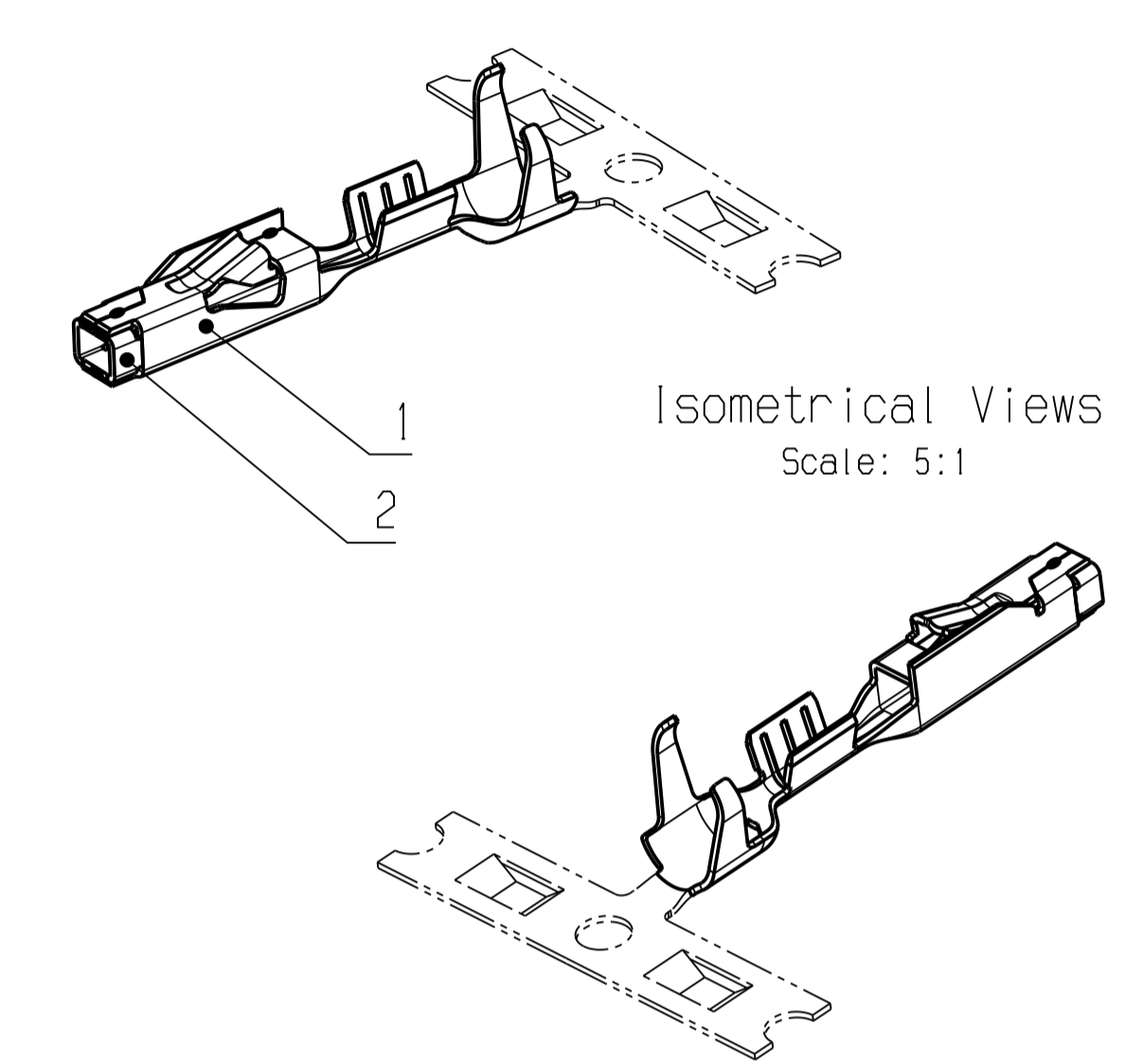


Dargestellter Leitungsquerschnitt: fuer Einzeldichtung 0.35mm²
 shown wire size: for single wire seal 0.35mm²

Form B fuer Einzeldichtung / for single wire seal



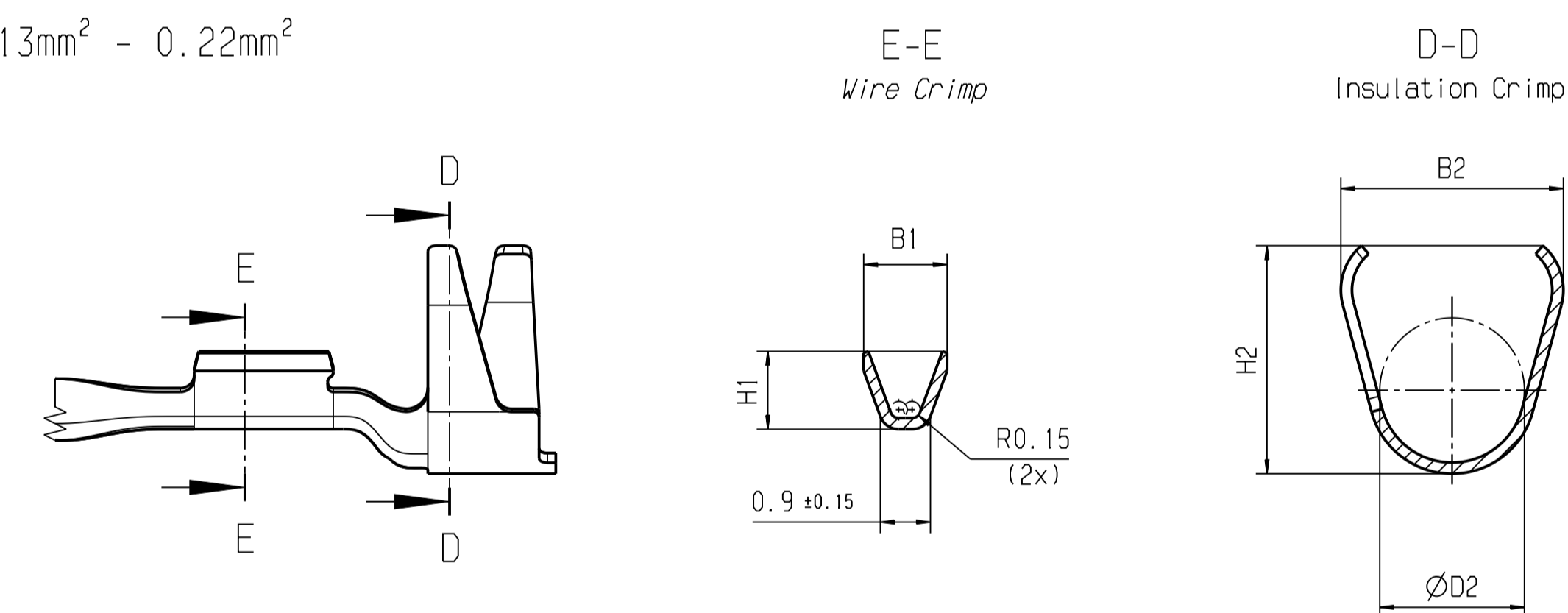
REV.	ZONE	DESCRIPTION	CS/REL. NO.	DATE	DESIGNED	CHECKED
1		First release		2020/07/07	Wethes	Klawinski
2		updated drawing to actual status		2023/11/30	Theelen	Weger
3		updated drawing to actual status		2024/07/10	Theelen	Placzko
4		updated drawing to actual status		2024/11/12	Theelen	Weger
5		updated drawing to actual status		2025/09/30	Theelen	Weger



Dargestellter Leitungsquerschnitt: fuer Einzeldichtung 0.13mm² - 0.22mm²
 shown wire size: for single wire seal 0.13mm² - 0.22mm²

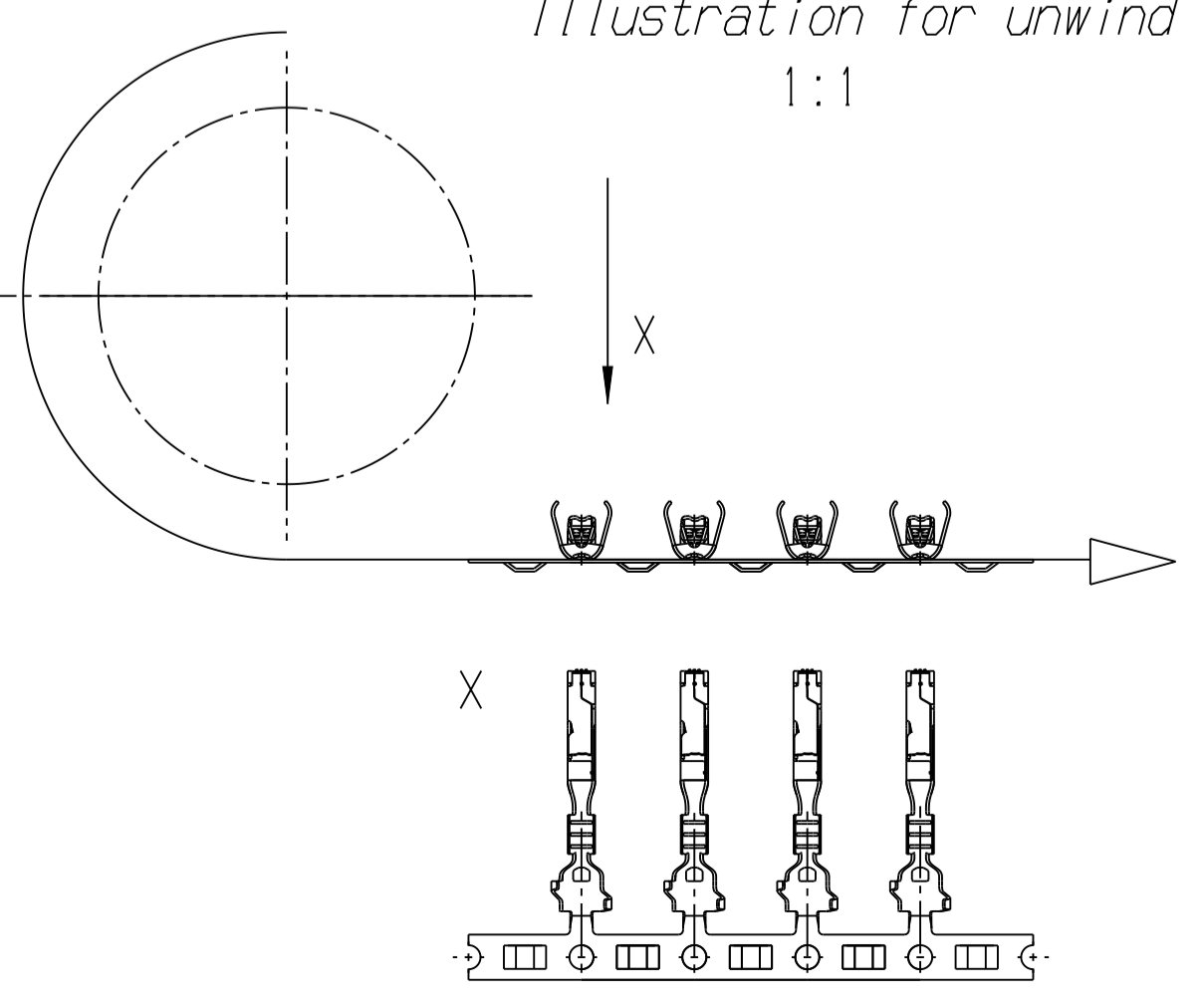
Form A fuer Einzeldichtung / for single wire seal

fehlende Maße siehe Form B
 missing dimensions see Form B



Bemerkungen / Comments	
Massgebend ist der deutsche Text Only the german language version shall be binding	
Einzelheiten der Ausführung bleiben dem Hersteller überlassen Details of design are left on manufacturer	
Entriegelungswerkzeug-Nr.: 50000.017.550 Extraction tool no.: ...	
Materialdicke: Basic Part (t=0.2), Spring (t=0.2) Material thickness ...	
Passend fuer Flachstecker 1.2mm x 0.6mm Compatibly for blade terminal ...	
Kontaktbereich frei von Oberflächenbeschädigungen Contact area without Surface Damages	
⚠ (Au) Kontaktfeder vergoldet (Kontaktzone) (Au) spring Gold plated (contact area)	
⚠ (Ag) Kontaktfeder versilbert (nur Kontaktzone) (Ag) spring Silver plated (only contact area)	
Fuer Silber Beschichtung: Elektrische Leistung wird nicht durch Grau- oder Schwarzanlauf auf der Silber Oberfläche beeinträchtigt. Grau- oder Schwarzanlauf auf der Silber Oberfläche zulässig. For silver plating: electrical performance is not affected by grey or black tarnish on the silver plating surface. Acceptable silver surface can include grey or black tarnish.	
ZULAESSIGE LAGERBEDINGUNGEN FUEER LEAR CS-PRODUKTE GEMAEISS V/8023/06/R PERMISSIBLE STORAGE CONDITIONS FOR LEAR CS-PRODUCTS IN ACCORDANCE TO...	

Dargestellte Abspullage
 Illustration for unwind
 1:1



Wire size Range [mm ²]	LEAR SEM Part Number	LEAR CS Part Number	Material	Surface	Material	Surface contact area	H1 ±0.2	B1 ±0.2	ØD1 ±0.15	H2 ±0.2	B2 ±0.2	ØD2 ±0.2	Form Design	L1 ±0.2	L2 ±0.2	L3 ±0.2	J1 ±0.2	Lgesamt ±0.5 (total length)	Gewicht Weight (g)
1-1.5	E27317100	28885 000 003	CuNiSi	frSn 1+1	CuNiSi	(Au) 2	2.9	2.5	1.4	4.1	4.0	2.6	B	3.0	2.0	6.8	0.8	16.55	0.206
	(Ag) 1																		
	frSn 1+1																		
0.5-0.75	E27317000	28886 000 003	CuNiSi	frSn 1+1	CuNiSi	(Au) 2	2.2	2.0	1.0	4.1	4.0	2.6	B	2.6	2.0	6.4	0.8	16.0	0.198
	(Ag) 1																		
	frSn 1+1																		
0.35	E27316900	28887 000 003	CuNiSi	frSn 1+1	CuNiSi	(Au) 2	1.9	1.8	0.8	4.1	4.0	2.6	A	2.6	2.0	6.4	0.8	16.0	0.193
	(Ag) 1																		
	frSn 1+1																		
0.13-0.22	E27316800	28888 000 003	CuNiSi	frSn 1+1	CuNiSi	(Au) 2	1.4	1.5	-	4.1	4.0	2.6	A	2.5	2.0	6.2	0.8-0.25	16.0	0.186
	(Ag) 1																		
	frSn 1+1																		
Wire size Range [mm ²]	LEAR SEM Part Number	LEAR CS Part Number	Material	Surface	Material	Surface contact area	H1 ±0.2	B1 ±0.2	ØD1 ±0.15	H2 ±0.2	B2 ±0.2	ØD2 ±0.2	Form Design	L1 ±0.2	L2 ±0.2	L3 ±0.2	J1 ±0.2	Lgesamt ±0.5 (total length)	Gewicht Weight (g)
	LEAR Assembly Part Number (Strip form)	Pos. 1: Basic Part																	

GENERAL TOLERANCES ISO 2768 - mK		THE ENGLISH TRANSLATION IS BELIEVED TO BE ACCURATE. IN CASE OF DISCREPANCIES THE GERMAN VERSION SHALL GOVERN.		CS Drawing Number 20766	
ANGLE PROJECTION EU	MATERIAL: FINISH / SURFACE: COLOR:	see table	see table	WEIGHT CAD: [g]	VOLUME CAD: [mm ³]
SCALE: 10:1	LEAR CORPORATION		Lear Corporation GmbH Schlosserstraße 4 42899 Remscheid Germany		
START DATE: 2020/07/07	TITLE miscellaneous / cross carline MAK 1.2 - Plus for single wire sealing system				
DRAWN: TMAT	APPROVERS:				
DRW FILE NAME: 20766-CG-D_00105	CAD DIRECTORY / CAD LOCATION: K-AUTOMOT / LAGER-28 MODEL FILE NAME: 28887-P_00106				
LAST UPDATE: 2025/09/30	SEM DOCUMENT ID / DRAWING NUMBER: D00539150 - 5	REV.:	SHEET OF: 1	TYPE: CG	
CONFIDENTIAL - THIS DRAWING AND ALL INFORMATION DISCLOSED HEREIN ARE OWNED BY LEAR CORPORATION AND ARE NOT TO BE DISTRIBUTED OR DISSEMINATED IN ANY MANNER UNLESS EXPRESSLY AUTHORIZED IN WRITING BY LEAR CORPORATION.					

Official current version only in LEAR SEM. In printed form no update information service.
 Officialle aktuelle Ausgabe nur in LEAR SEM. In gedruckter Form kein Änderungsdienst.
 Catia V5 DIN A1